



**Output**

# What is Output?

## What is **output**?

- Data that has been processed into a useful form, called **information**
  - **Output device** is any hardware component that can convey information to user



# Display Devices

What is a **display device**?

- **Output device that visually conveys information**
  - Information on display device sometimes called **soft copy**
- **Monitor houses display device as separate peripheral**



# Display Devices

## What is a **CRT monitor**?

- Contains **cathode-ray tube (CRT)**
- Screen coated with **tiny dots of phosphor material**
  - Each dot consists of a red, blue, and green phosphor
- **Common sizes are 15, 17, 19, 21, and 22 inches**
  - **Viewable size** is diagonal measurement of actual viewing area



# Display Devices

## What is the **ENERGY STAR®** program?

- Encourages manufacturers to create energy-efficient devices that require little power when not in use
- Monitors and devices meeting guidelines display **ENERGY STAR** label



# Display Devices

## What is **resolution**?

- **Sharpness and clarity of image**
- **Higher resolution makes image sharper, displays more text on screen, makes some elements smaller**
- **Refresh rate** is speed at which monitor redraws images on screen

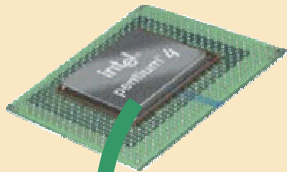


# Display Devices

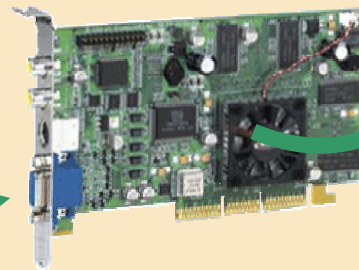
How does video travel from the processor to a CRT monitor?

- **Video card** (also called a **graphics card**) converts digital output from computer into analog video signal

**Step 1.** The processor sends digital video data to the video card.

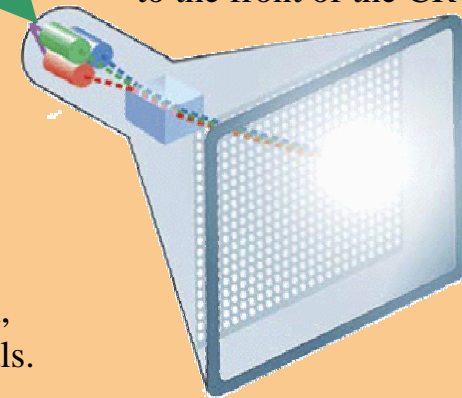


**Step 3.** The analog signal is sent through a cable to the CRT monitor.



**Step 2.** The video card's digital-to-analog converter (DAC) converts the digital video data to an analog signal.

**Step 4.** The CRT monitor separates the analog signal into red, green, and blue signals.



**Step 5.** Electron guns fire the three color signals to the front of the CRT.

**Step 6.** An image is displayed on the screen when the electrons hit phosphor dots on the back of the screen.

# Display Devices

## What are **video standards**?

- **Video Electronics Standards Association (VESA)** develops video standards

Standard	Suggested Resolution	Maximum Possible Colors
<b>Monochrome Display Adapter (MDA)</b>	720 x 350	1 for text
<b>Video Graphics Array (VGA)</b>	640 x 480	16
	320 x 200	256
<b>Extended Graphics Array (XGA)</b>	1024 x 768	256
	640 x 480	65,536
<b>Super Video Graphics Array (SVGA)</b>	800 x 600	16.7 million
	1024 x 768	16.7 million
	1280 x 1024	16.7 million
	1600 x 1200	16.7 million
<b>Beyond SVGA</b>	1920 x 1440	16.7 million
	2048 x 1536	16.7 million



# Display Devices

## What are various video card configurations?

- **Color depth** determines number of colors video card can display

Video Memory	Color Depth	Number of Colors	Maximum Resolution
1 MB	8-bit	256	1024 x 768
	16-bit	65,536	800 x 600
2 MB	8-bit	256	1024 x 768
	16-bit	65,536	1280 x 1024
	24-bit	16.7 million	800 x 600
4 MB	24-bit	16.7 million	1024 x 768
6 MB	24-bit	16.7 million	1280 x 1024
8 MB	32-bit	16.7 million	1600 x 1200
16 MB	32-bit	16.7 million	1920 x 1440
32 MB	32-bit	16.7 million	2048 x 1536
64 MB	32-bit	16.7 million	2048 x 1536
128 MB	32-bit	16.7 million	2048 x 1536

# Display Devices

## What is a **flat panel monitor**?

- **Uses liquid crystal display**
  - Also called **LCD monitor**
- **Takes up less desk space than CRT monitor**
- **Consumes less than one-third the power**



# Display Devices

**What are some mobile devices that have LCD screens?**

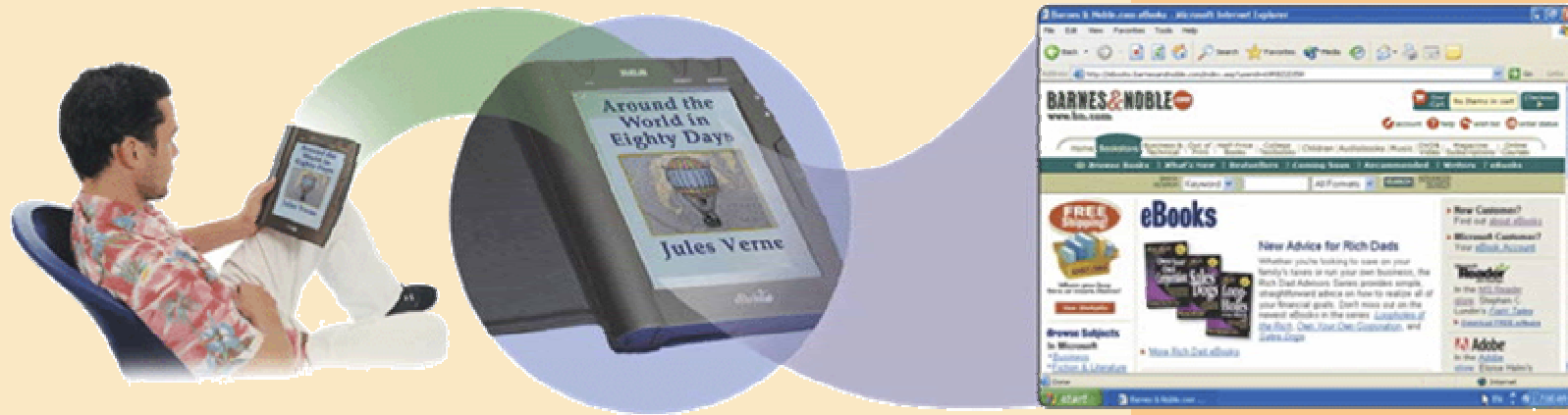
- **Notebooks**
- **Tablet PCs**
- **PDA's**
- **Smart phones**



# Display Devices

## What is an **electronic book (e-book)**?

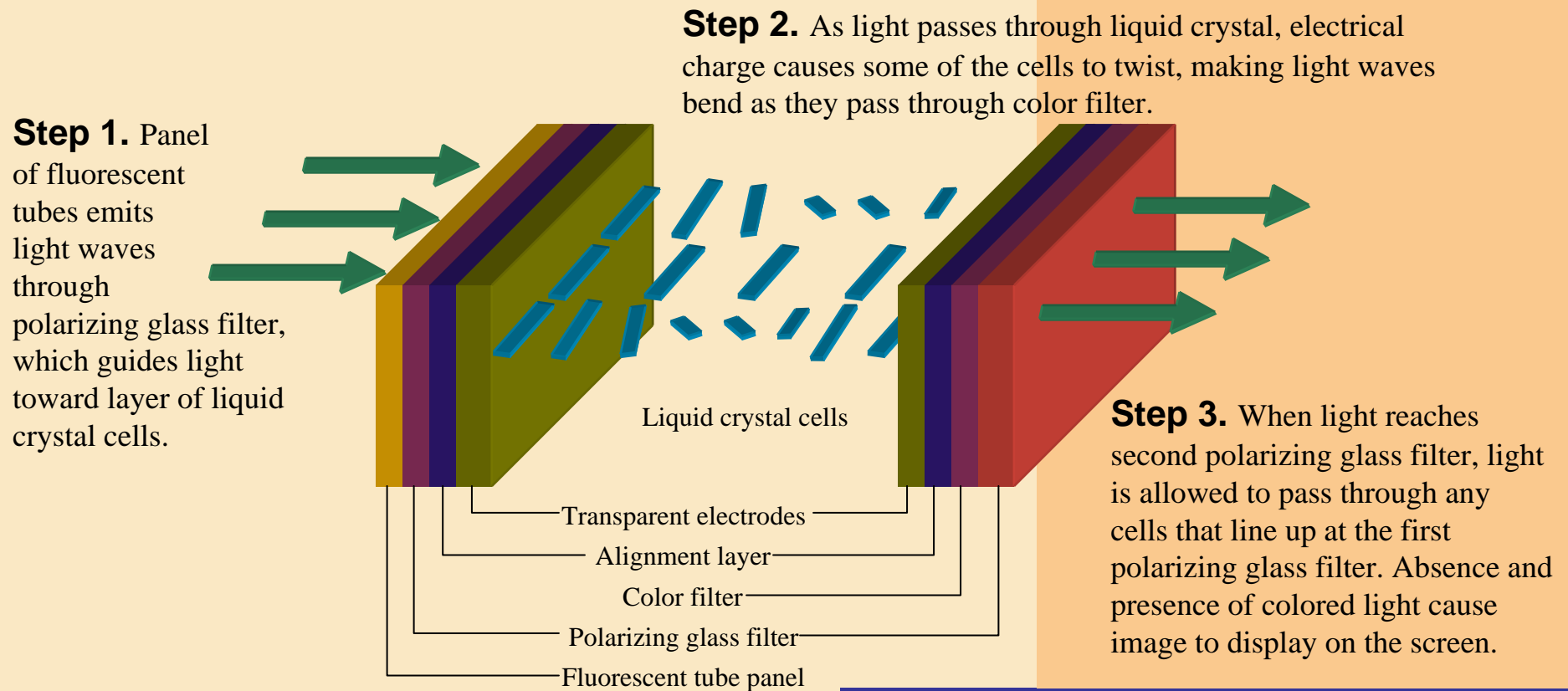
- **Small, book-sized computer that uses LCD screen**
- **Allows users to read, save, highlight, bookmark, and add notes to online text**
- **Download new book content from Web**



# Display Devices

## How does LCD work?

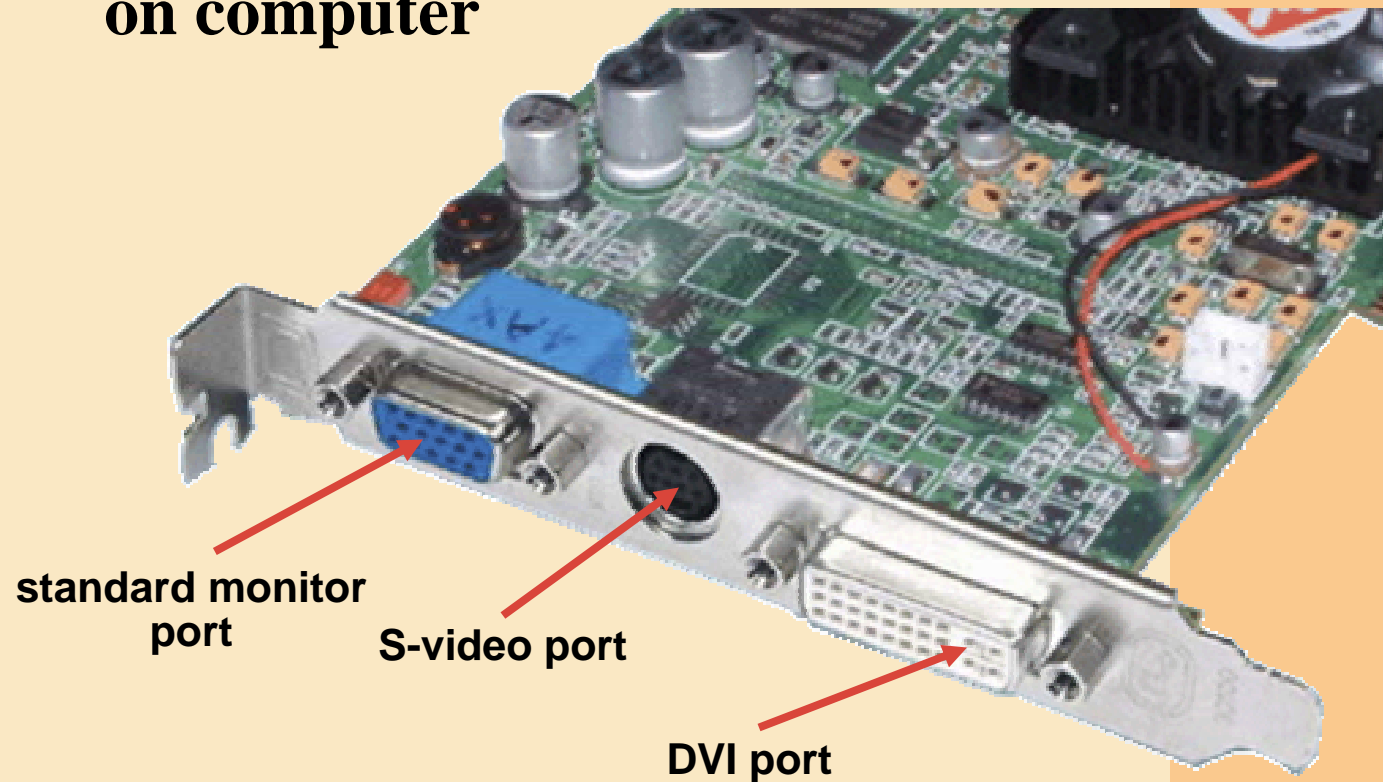
- Uses liquid compound to present information on screen



# Display Devices

**How do you use a flat panel monitor with a video card?**

- Plug monitor into **Digital Video Interface (DVI)** port on computer



# Display Devices

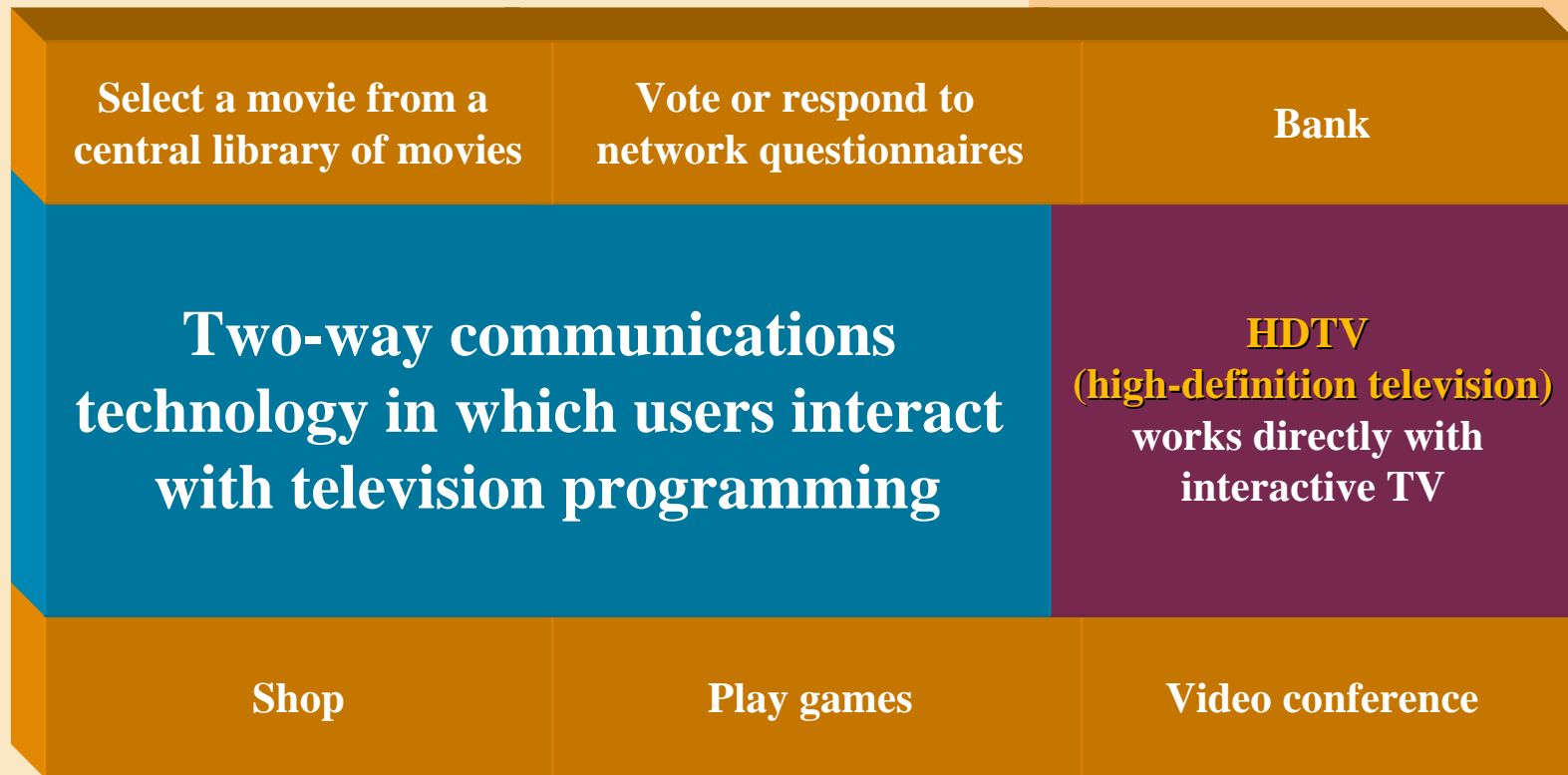
## What is a **gas plasma display**?

- **Displays image by applying voltage to layer of gas**
  - **Larger screen size and higher display quality than LCD, but much more expensive**



# Display Devices

## What is **interactive TV**?





# Printers

## What is a **printer**?

- Output device that produces text and graphics on paper
- Result is **hard copy**, or **printout**
- Two orientations: **portrait** and **landscape**

Portrait



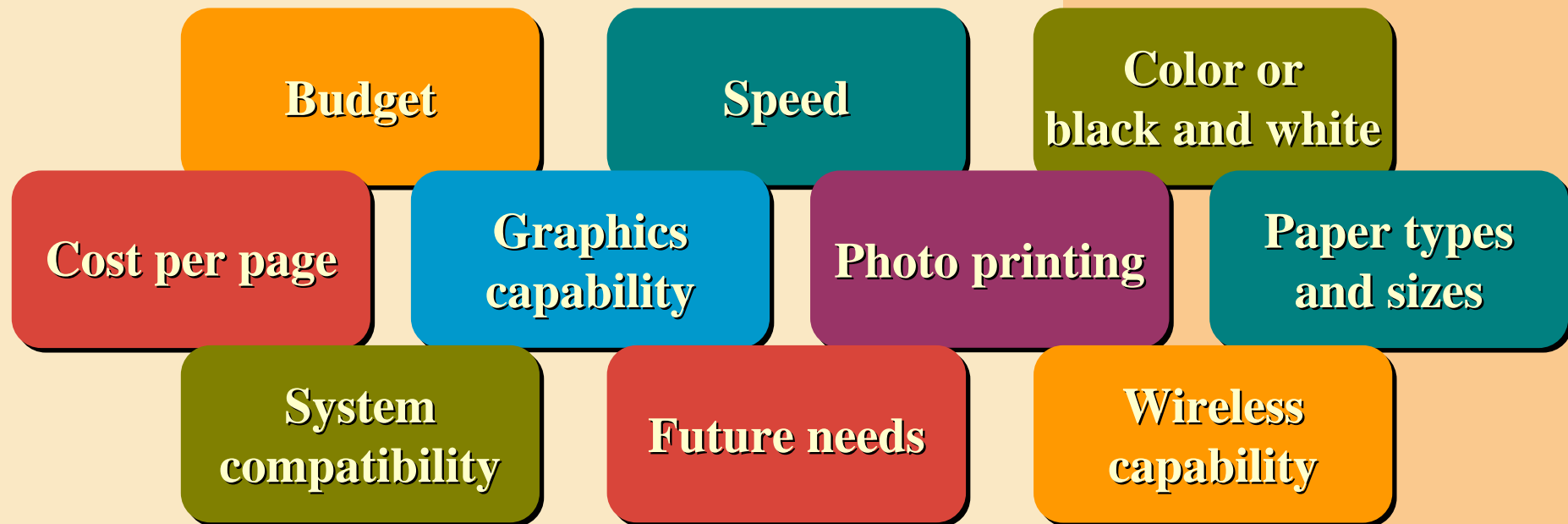
Landscape

Rodney's Gadgets Annual Income Statement				Break-Even Analysis			
Revenue	Units Sold	726,000	Units	Revenue	Expenses	Income	
	Price per Unit	\$19.55	300,000	\$14,137,500	\$11,700,000	\$2,437,500	(\$1,982,000)
	Total Revenue	\$14,137,500	328,000	6,337,800	11,700,000	(5,362,200)	(6,382,000)
Fixed Expenses	Administrative	\$1,880,000	350,000	6,826,000	12,676,000	(5,850,000)	(6,200,000)
	Leasing	1,428,000	378,000	7,512,000	12,486,000	(4,974,000)	(6,137,000)
	Marketing	1,790,000	426,000	8,287,800	13,200,000	(4,912,200)	(6,328,000)
	Salary and Benefits	1,500,000	450,000	8,775,000	13,575,000	(4,800,000)	(6,506,000)
	Total Fixed Expenses	\$6,626,000	474,000	9,200,600	13,856,000	(4,617,000)	(6,887,000)
Variable Expenses	Total Variable Expenses	\$7,511,500	890,000	9,700,000	14,326,000	(4,578,000)	(7,075,000)
	Material Cost per Unit	\$11.00	920,000	10,237,000	14,700,000	(4,463,000)	(7,268,000)
	Total Material Cost	\$7,878,000	990,000	10,728,000	15,575,000	(4,847,000)	(7,655,000)
	Manufacturing Cost per Unit	\$4.90	978,000	11,212,800	16,490,000	(5,277,200)	(8,032,000)
	Total Manufacturing Cost	\$3,603,500	1,008,000	11,706,300	16,838,000	(5,131,700)	(8,383,000)
	Total Variable Expenses	\$79,878,500	1,026,000	12,187,800	16,200,000	(4,012,000)	(8,695,000)
Summary	Total Expenses	\$17,700,000	1,126,000	13,186,400	16,850,000	(3,787,000)	(9,080,000)
	Operating Income	(\$1,982,000)	700,000	13,836,000	17,220,000	(3,871,000)	(9,567,000)

# Printers

## How do you know which printer to buy?

- Depends on printing needs



# Printers

## What is a **dot-matrix printer**?

- **Impact printer that produces printed images when tiny wire pins strike ribbon**
  - **Impact printer** forms characters by striking mechanism against inked ribbon that contacts paper



# Printers

## What is a **line printer**?

- **High-speed impact printer that prints entire line at a time**
- **Speed measured in lines per minute (lpm)**
  - **Band printer** prints fully formed characters using a hammer mechanism
  - **Shuttle-matrix printer** is high-speed printer that works like dot-matrix printer



# Printers

## What is an **ink-jet printer**?

- A type of nonimpact printer that sprays tiny drops of liquid ink onto paper
  - **Nonimpact printer** forms characters and graphics without striking paper
- Prints in black-and-white or color on a variety of paper types



# Printers

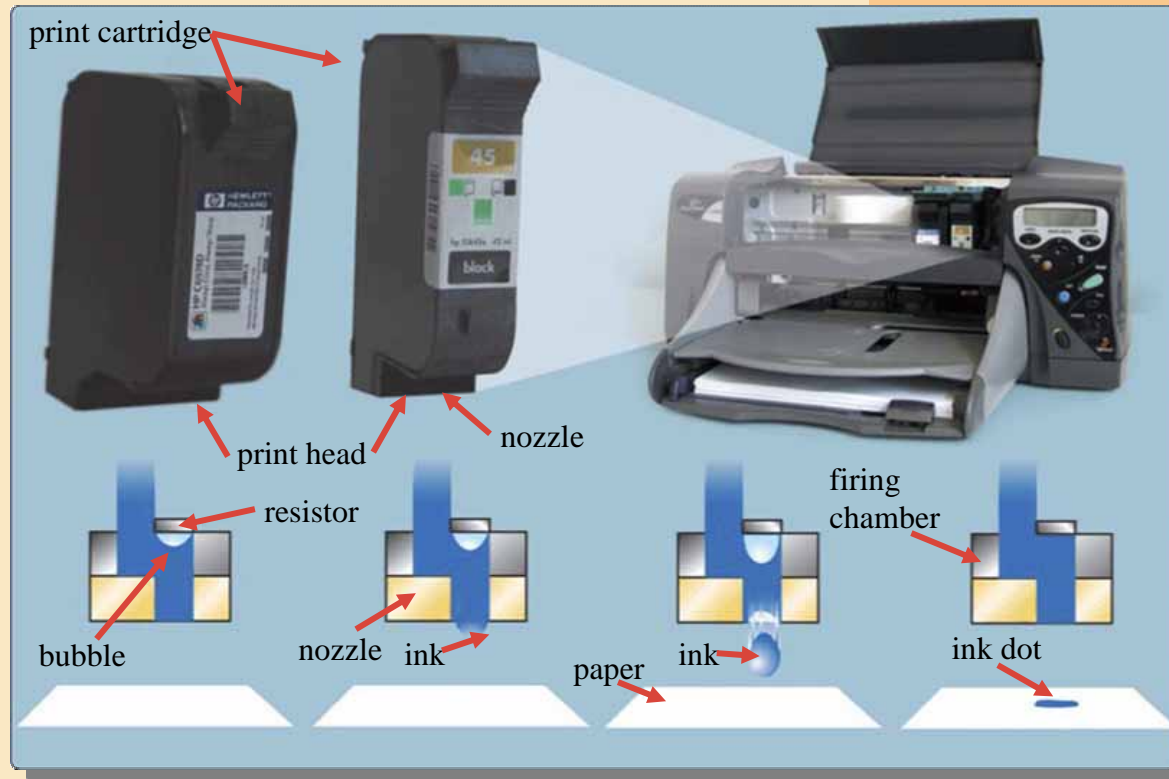
What is the **resolution** of a printer?

- Sharpness and clarity
- Measured by number of **dots per inch (dpi)** printer can output



# Printers

## How does an ink-jet printer work?



**Step 1.** A small resistor heats the ink, causing the ink to boil and form a vapor bubble.

**Step 2.** The vapor bubble forces the ink through the nozzle.

**Step 3.** Ink drops onto the paper.

**Step 4.** As the vapor bubble collapses, fresh ink is drawn into the firing chamber.

# Printers

## What is a **photo printer**?

- **Color printer that produces photo-lab-quality pictures**

**Step 1.** Take photograph with digital camera and store it on media card in the camera.

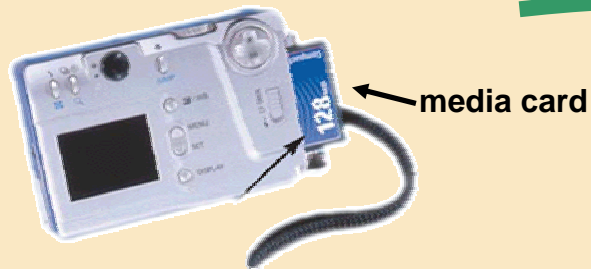
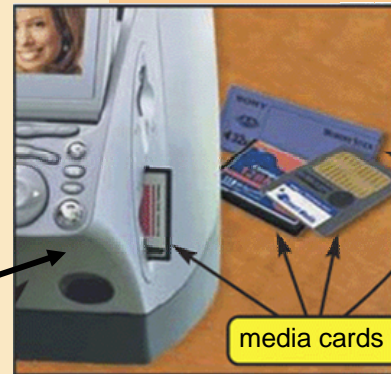


photo printer



**Step 2.** Insert media card into card reader on photo printer.

**Step 3.** Use menu to select desired image to print, view it on LCD screen, edit if necessary, select size of the print, and then print image.



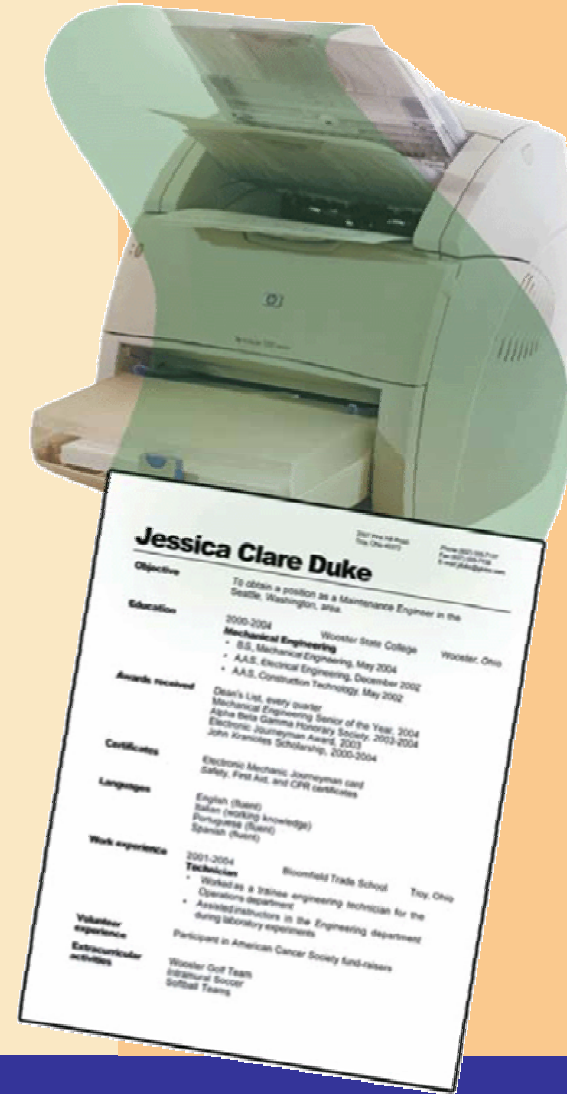
**Step 4.** Remove printed photo from the printer.



# Printers

## What is a **laser printer**?

- High-speed, high-quality nonimpact printer
- Prints text and graphics in very high-quality resolution, ranging from 600 to 2,400 dpi
- Typically costs more than ink-jet printer, but is much faster

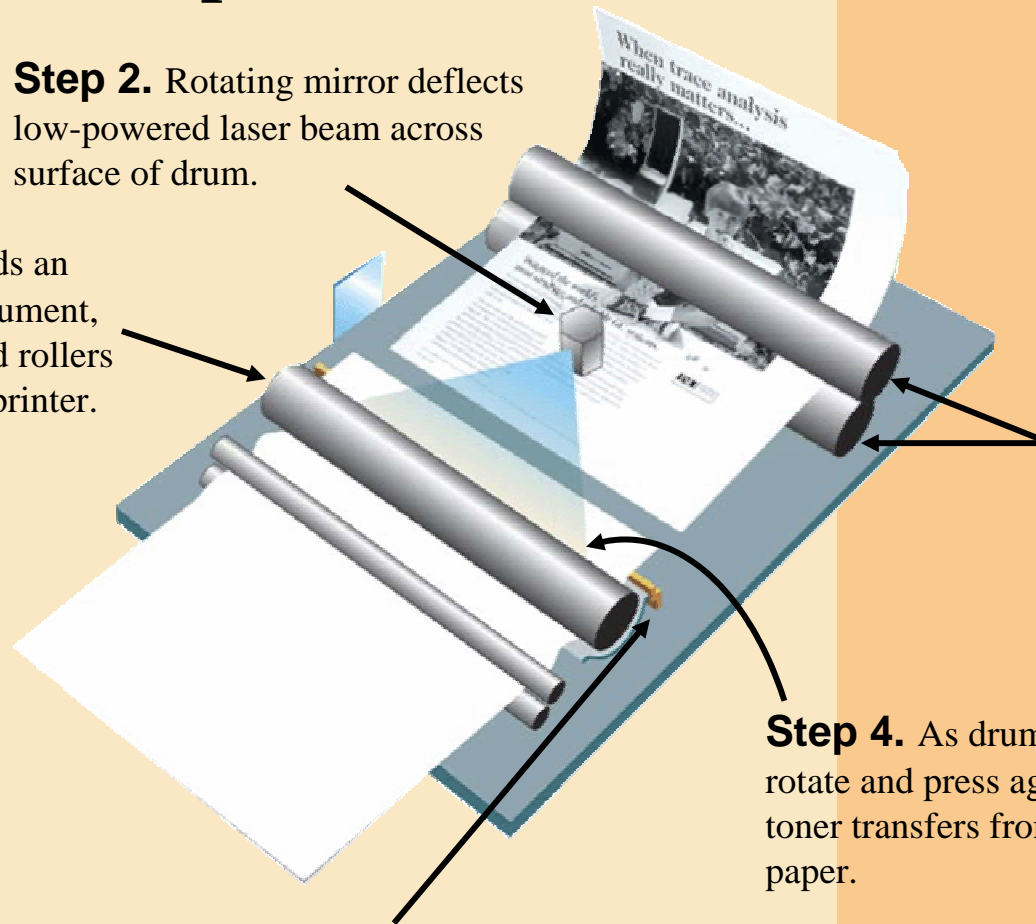


# Printers

## How does a laser printer work?

**Step 1.** After user sends an instruction to print a document, drum rotates as gears and rollers feed sheet of paper into printer.

**Step 2.** Rotating mirror deflects low-powered laser beam across surface of drum.



**Step 3.** Laser beam creates a charge that causes toner to stick to drum.

**Step 4.** As drum continues to rotate and press against paper, toner transfers from drum to paper.

**Step 5.** Set of rollers uses heat and pressure to permanently fuse toner to paper.

# Printers

## What is a **thermal printer**?

- Generates images by pushing electrically heated pins against heat-sensitive paper
  - **Dye-sublimation printer**, (also called a **digital photo printer**) uses heat to transfer dye to specially coated paper



professional



home use

# Printers

## What is a **portable printer**?

- **Small, lightweight, battery-powered printer that allows mobile user to print from notebook computer, Tablet PC, or PDA while traveling**



# Printers

## What is a **label printer**?

- **Small printer that prints on adhesive-type material**
- **Most also print bar codes**
  - **Postage printer** has built-in digital scale and prints postage stamps



# Printers

## What is a **plotter**?

- **Sophisticated printer used to produce high-quality drawings**
- **Large-format printer creates photo-realistic-quality color prints**



# Printers

## What is **wireless printing**?

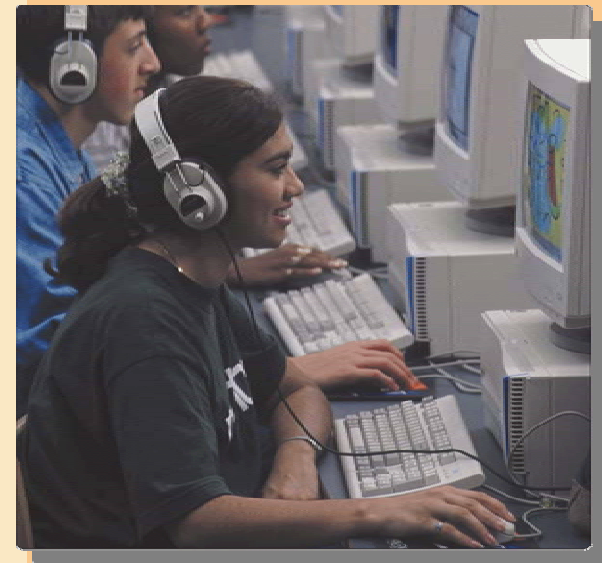
- **Output transmitted to printer wirelessly via infrared light waves or radio waves**
  - **Bluetooth™ printing** uses radio waves
  - Devices need to be within 30-foot range



# Speakers and Headsets

What is an **audio output device**?

- **Computer component that produces music, speech, or other sounds**
- **Speakers and headsets are common devices**





# Speakers and Headsets

## What is **voice output**?

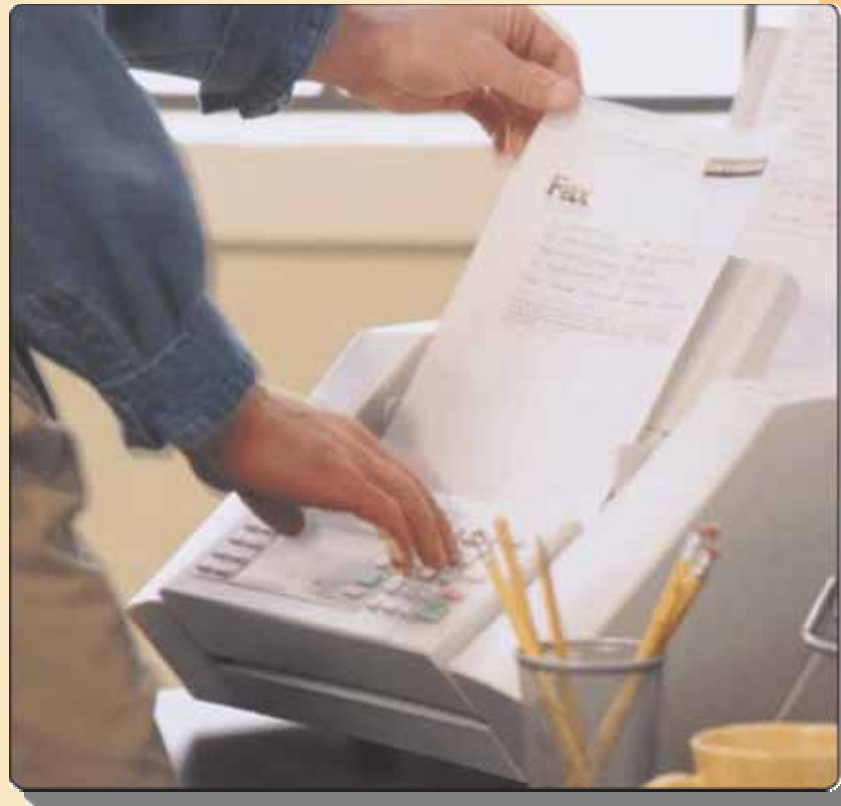
- Computer talks to you through speakers on computer
- **Internet telephony** allows you to have conversation over Web



# Other Output Devices

What is a **facsimile (fax) machine**?

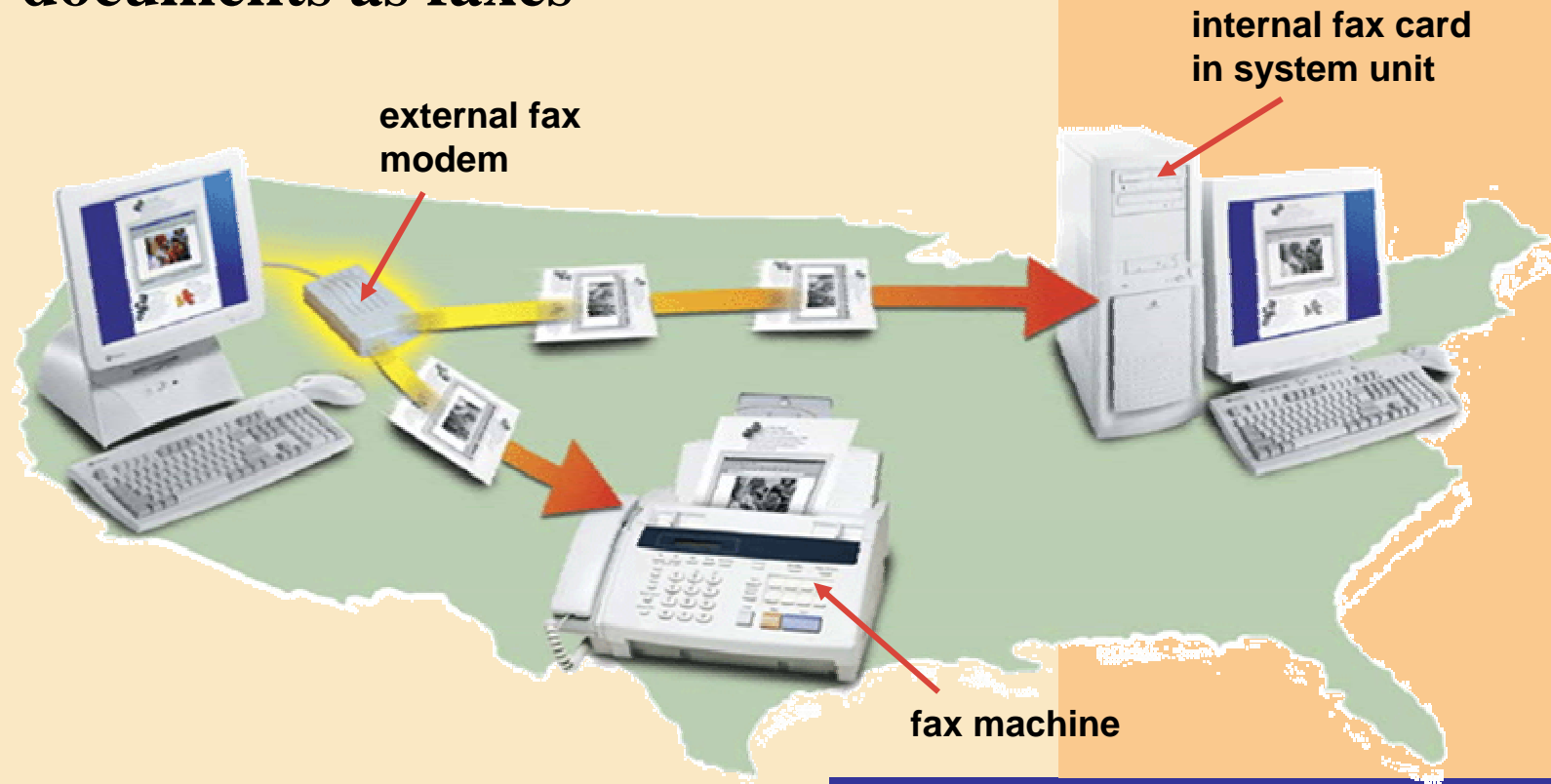
- **Device that transmits and receives documents over telephone lines**



# Other Output Devices

## What is a **fax modem**?

- **Modem that allows you to send and receive electronic documents as faxes**



# Other Output Devices

What is a **multifunction peripheral**?

- Provides functionality of printer, scanner, copy machine, and fax machine



# Other Output Devices

What is a **data projector**?

- Device that takes image from computer screen and projects it onto larger screen



# Other Output Devices

## What is **force feedback**?

- Sends resistance to joystick or wheel in response to actions of user



# Putting It All Together

## What are suggested output devices for the home user?

### User



Home

### Monitor

- 17- or 19-inch color CRT monitor or flat panel monitor

### Printer

- Ink-jet color printer
- Photo printer

### Other

- Speakers
- Headset
- Force-feedback joystick and wheel

# Putting It All Together

What are suggested output devices for the small office/home office user?

## User



**Small Office/  
Home Office  
(SOHO)**

## Monitor

- 19- or 21-inch color CRT monitor or flat panel monitor
- Color LCD display on Tablet PC or PDA

## Printer

- Multifunction peripheral
- Ink-jet color printer
- Laser printer, black and white
- Label printer
- Postage printer

## Other

- Fax machine
- Speakers



# Putting It All Together

What are suggested output devices for the mobile user?

## User



**Mobile**

## Monitor

- 15.7-inch color LCD display on notebook computer
- Color LCD display on PDA

## Printer

- Portable color printer
- Ink-jet color printer
- Laser printer, black and white
- Photo printer

## Other

- Fax modem
- Headset
- DLP data projector

# Putting It All Together

What are suggested output devices for the large business user?

## User



**Large Business**

## Monitor

- 19- or 21-inch color CRT monitor or flat panel monitor
- Color LCD display on Tablet PC or PDA

## Printer

- High-speed laser printer
- Laser printer, color
- Line printer (for large reports from a mainframe)
- Label printer

## Other

- Fax machine or fax modem
- Speakers
- Headset
- DLP data projector

# Putting It All Together

What are suggested output devices for the power user?

## User



**Power**

## Monitor

- 23-inch color flat panel monitor

## Printer

- Laser printer, black and white
- Plotter or large-format printer
- Photo printer; or
- Dye-sublimation printer

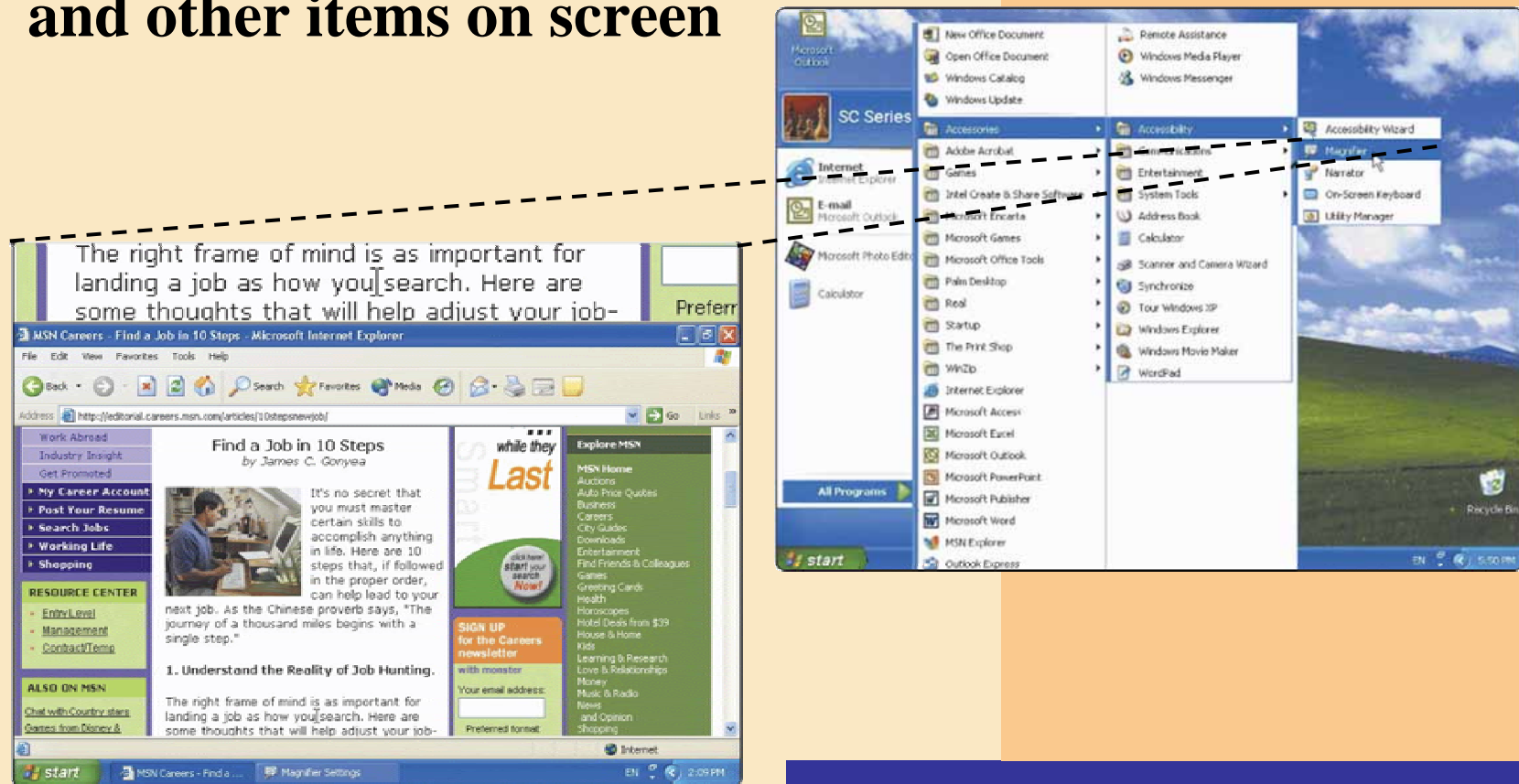
## Other

- Fax machine or fax modem
- Speakers
- Headset

# Output Devices for Physically Challenged Users

## What is the **Magnifier** command?

- **Windows Magnifier command enlarges text and other items on screen**



# Output Devices for Physically Challenged Users

**What other output options are available for visually impaired users?**

- **Change Window settings, such as increasing size or changing color of text to make words easier to read**
- **Blind users can work with voice output**
- **Braille printer** outputs information in Braille onto paper

