



NAR Labs 國家實驗研究院

國家實驗動物中心

National Laboratory Animal Center

國研院動物中心 新竹臨床前測試實驗室

業務洽詢：

02-27895558 黃苡瑋 (行銷)

02-27895566 秦咸靜博士



NLAC services and locations

Medical devices



Preclinical testing lab (Hsinchu)
(Since 2017, 1,000m²)



Preclinical animal care and surgery facility (Tainan)
(Since 2015, 1,000 m²)

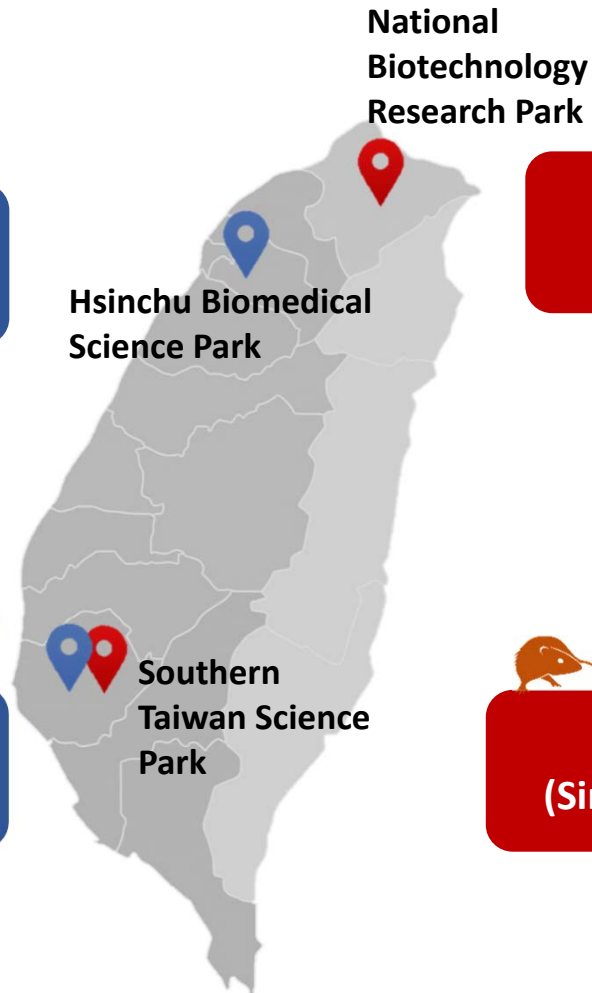
New drug development



NLAC (Taipei)
(since 1994, 25,200m²)

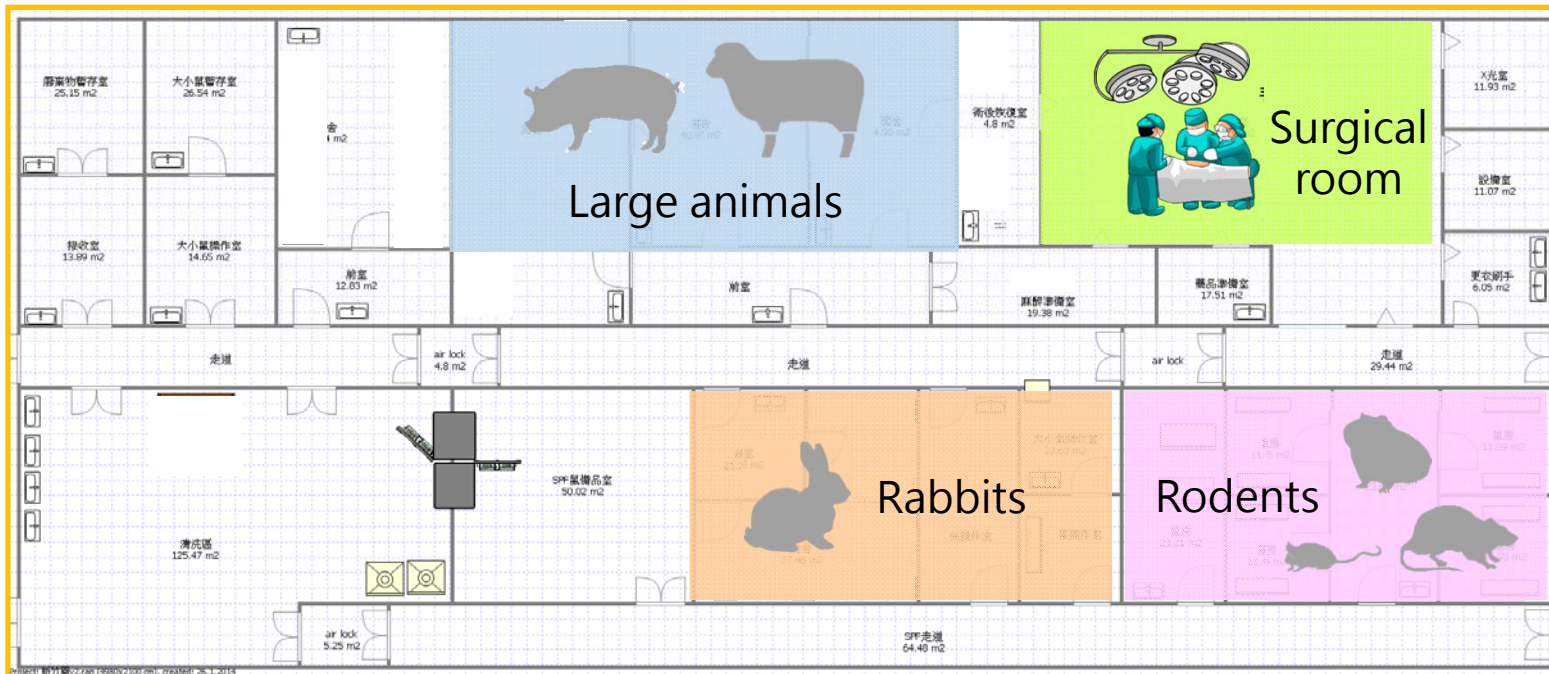


NLAC (Tainan)
(Since 2008, 15,954m²)



Preclinical testing lab (Hsinchu)

Multiple species: rats, mice, guinea pigs, rabbits, pigs and goats



Preclinical testing lab (Hsinchu)

High-class surgical environment

Anaesthesia and postoperative care :

Drager anaesthesia work stations

ICU

Professional veterinary team

Surgical equipment for

Thoracotomy

Laparotomy

First aid :

Automated External Defibrillator

Medicine for emergency treatment



Preclinical testing lab (Hsinchu)

Myocardial infarction model:



Pharmacokinetics:



Preclinical testing lab (Hsinchu)

Medical imaging service

Siemens Acuson S2000 Ultrasound Machine

- ◆ Colour Doppler
- ◆ Cardiovascular studies and surgical navigation



(儀科中心設備)



(儀科中心設備)

Siemens ARCADIS VARIC (C-arm)

- ◆ For navigation of orthopedic, trauma, cardiovascular and urologic surgery
- ◆ Minimal invasive surgery

Preclinical testing lab (Hsinchu)

Medical imaging service

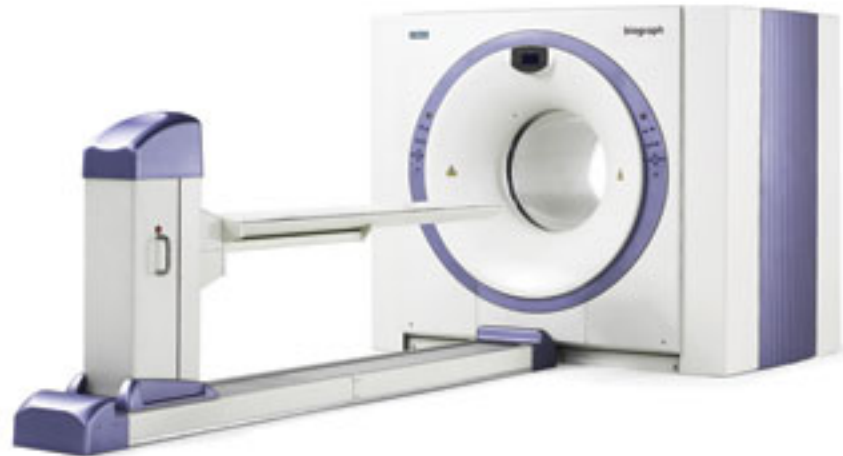


Philips Achieva X 3.0 (MRI)

- ◆ 3T MRI (high speed and quality)
- ◆ Brain and a variety of soft tissues and organs

Siemens Biograph 6 PET/CT

- ◆ Tumour, neurological and cardiovascular studies





NAR Labs 國家實驗研究院

國家實驗動物中心

National Laboratory Animal Center

The preclinical testing facility conforming to international standards

QUALITY & WELLBEING COME FIRST

