



2006 LABOUR STATISTICS IN BRIEF

CATALOGUE NO. 6104.0



OVERVIEW

Labour statistics are of interest from both economic and social perspectives. This pamphlet provides a brief overview of data available from the ABS relating to Australian labour statistics. Comparisons of data over a 10-year period are given for employment and unemployment, wages and prices, job vacancies and industrial relations. Also included are recent data on the labour force.

The quarterly publication *Australian Labour Market Statistics* (cat. no. 6105.0) provides regular updates on a range of labour statistics to provide an overall picture of the labour market. The publication is available free from the ABS website and is accessible through the Labour Theme Page. To find the Theme Page go to < <http://www.abs.gov.au> > (Themes-People-Labour).

For a comprehensive reference to the concepts and definitions underpinning Australian labour statistics refer to the electronic publication *Labour Statistics: Concepts, Sources and Methods* (cat. no. 6102.0.55.001).

More information on labour statistics can be found in the source publications listed throughout this pamphlet.

KEY FACTS

	UNITS	ANNUAL AVERAGE	
		1995	2005
CIVILIAN POPULATION			
Aged 15 years and over	'000	14 134.4	16 331.1
LABOUR FORCE PARTICIPATION			
Males	%	73.9	72.1
Females	%	53.7	57.0
Persons	%	63.6	64.4
EMPLOYMENT			
Males	'000	4 696.2	5 507.2
Females	'000	3 559.7	4 480.0
Persons	'000	8 256.0	9 987.3
Employment/population ratio	%	58.4	61.2
Part-time employment:			
Proportion of total employment			
Males	%	11.0	14.7
Females	%	42.7	45.7

KEY FACTS

	UNITS	ANNUAL AVERAGE	
		1995	2005
UNEMPLOYMENT			
Unemployed persons	'000	739.5	536.7
Unemployment rate			
Males	%	8.6	4.9
Females	%	7.7	5.3
Persons	%	8.2	5.1
Average duration of unemployment, persons	weeks	54.7	39.6

HOURS OF WORK (a)

Employed persons	hours	34.6	33.7
Full-time	hours	40.9	40.7
Part-time	hours	15.3	16.2

(a) Based on actual hours collected in the reference week of each month.

		YEAR ENDED DECEMBER	
		1995	2005
INDUSTRIAL RELATIONS			
Industrial disputes			
Working days lost per thousand employees	no.	78.7	26.4
Working days lost	'000	547.6	228.2
Trade union members	%	AUG 1995 32.7	AUG 2005 22.4

		12 MONTHS TO DEC QTR 2005	10 YEARS TO DEC QTR 2005
--	--	---------------------------	--------------------------

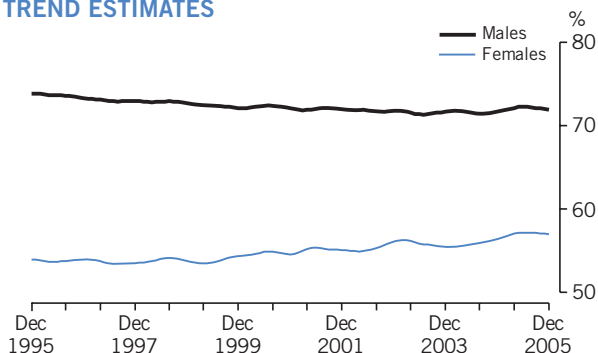
CHANGES IN WAGES AND PRICES

Wage price index, total hourly rate of pay excluding bonuses	%	4.1	na
Consumer price index, all groups	%	2.8	27.1
Average weekly earnings, full-time adults	\$	NOV 1995 702.90	NOV 2005 1 078.50

Source: Australian Labour Market Statistics (cat. no. 6105.0); Average Weekly Earnings, Australia (cat. no. 6302.0); Consumer Price Index, Australia (cat. no. 6401.0); Employee Earnings, Benefits and Trade Union Membership, Australia (cat. no. 6310.0); Industrial Disputes, Australia (cat. no. 6321.0.55.001); Labour Force, Australia, Detailed — Electronic Delivery (cat. no. 6291.0.55.001); Labour Force, Australia, Detailed, Quarterly (cat. no. 6291.0.55.003); Labour Price Index, Australia (cat. no. 6345.0).

LABOUR FORCE

LABOUR FORCE PARTICIPATION RATES: TREND ESTIMATES



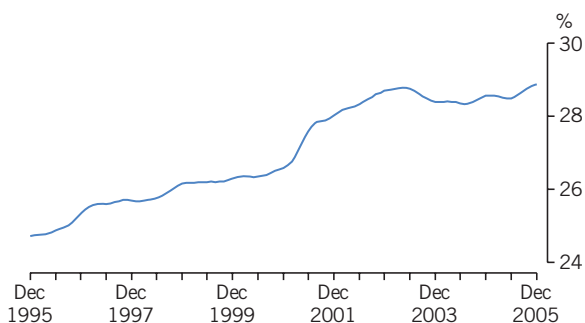
Source: Labour Force, Australia, Spreadsheets (cat. no. 6202.0.55.001).

EMPLOYED PERSONS: OCCUPATION

	NOVEMBER 2005	
	'000	%
Managers and administrators	822.8	8.2
Professionals	1 914.5	19.1
Associate professionals	1 235.4	12.3
Tradespersons and related workers	1 270.2	12.7
Advanced clerical and service workers	409.5	4.1
Intermediate clerical, sales and service workers	1 658.2	16.6
Intermediate production and transport workers	817.9	8.2
Elementary clerical, sales and service workers	1 017.3	10.2
Labourers and related workers	871.2	8.7
Total	10 017.0	100.0

Source: Labour Force, Australia, Detailed, Quarterly (cat. no.6291.0.55.003).

PART-TIME EMPLOYMENT AS A PROPORTION OF TOTAL EMPLOYMENT: TREND ESTIMATES



Source: Labour Force, Australia, Spreadsheets (cat. no. 6202.0.55.001).

NOVEMBER 2005
'000 %

EMPLOYED PERSONS: STATUS IN EMPLOYMENT

Employees	8 746.6	87.3
Own account workers	935.6	9.3
Employers	299.1	3.0
Contributing family workers	35.7	0.4
Total	10 017.0	100.0

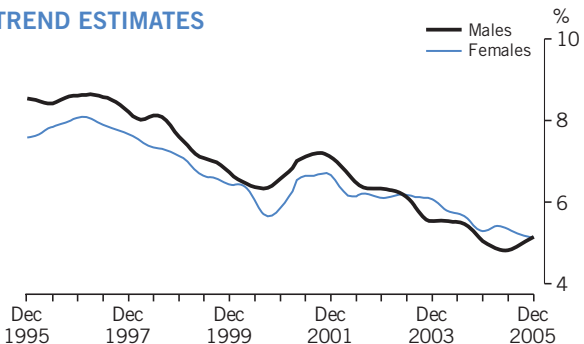
Source: Labour Force, Australia, Detailed – Electronic Delivery (cat. no. 6291.0.55.001).

EMPLOYED PERSONS: INDUSTRY

Agriculture, forestry and fishing	353.3	3.5
Mining	134.0	1.3
Manufacturing	1 076.9	10.8
Electricity, gas and water supply	87.2	0.9
Construction	854.8	8.5
Wholesale trade	429.0	4.3
Retail trade	1 513.1	15.1
Accommodation, cafes and restaurants	499.4	5.0
Transport and storage	456.9	4.6
Communication services	179.5	1.8
Finance and insurance	366.3	3.7
Property and business services	1 197.3	12.0
Government administration and defence	455.7	4.5
Education	730.8	7.3
Health and community services	1 021.3	10.2
Cultural and recreational services	273.9	2.7
Personal and other services	387.7	3.9
Total	10 017.0	100.0

Source: Labour Force, Australia, Quarterly (cat. no. 6291.0.55.003).

UNEMPLOYMENT RATES: TREND ESTIMATES



Source: Labour Force, Australia, Spreadsheets (cat. no. 6202.0.55.001).

LABOUR FORCE STATUS: PERSONS AGED 15–19 AND WHETHER ATTENDING FULL-TIME EDUCATION

ANNUAL AVERAGE 2005

	UNITS	NOT ATTENDING FULL-TIME EDUCATION	ATTENDING FULL-TIME EDUCATION	TOTAL
Employed	'000	333.1	385.0	718.2
Full-time	'000	227.5	17.4	244.9
Part-time	'000	105.7	367.6	473.3
Unemployed	'000	57.7	71.0	128.7
Looking for full-time work	'000	50.6	11.7	62.3
Looking for part-time work	'000	7.1	59.3	66.4
Unemployment rate	%	14.7	15.6	15.2
Labour force participation rate	%	87.2	48.1	60.6
Unemployment to population ratio	%	12.8	7.5	9.2
Looking for full-time work	%	11.3	1.2	4.5

Source: Labour Force, Australia, Detailed – Electronic delivery (cat. no. 6291.0.55.001).

	NOVEMBER 2005	
	'000	%
UNEMPLOYED PERSONS: DURATION OF UNEMPLOYMENT		
Under 52 weeks		
Under 4 weeks	128.5	25.9
4 weeks and under 13 weeks	129.2	26.1
13 weeks and under 26 weeks	65.2	13.2
26 weeks and under 52 weeks	79.8	16.1
52 weeks and over (long-term unemployed)		
52 weeks and under 104 weeks	34.7	7.0
104 weeks and over	58.2	11.7
Total	495.5	100.0

Source: Labour Force, Australia, Detailed – Electronic Delivery (cat. no. 6291.0.55.001).

	SEPTEMBER 2005	
	'000	%
LABOUR FORCE UNDERUTILISATION		
Underutilised labour force (a)	1 113.3	(b) 10.5
Underemployed (c)	566.6	5.3
Unemployed	546.7	5.1
Labour force	10 634.6	100.0

(a) Underutilised labour force comprises the unemployed plus underemployed.

(b) Referred to as the labour force underutilisation rate.

(c) Underemployed workers are employed persons who want, and are available for, more hours of work than they currently have.

Source: Australian Labour Market Statistics (cat. no. 6105.0).

WAGES AND PAY-SETTING METHODS

ANNUAL % CHANGE TO DEC QTR 2005

WAGE PRICE INDEX (a): OCCUPATION

Managers and administrators	3.8
Professionals	4.4
Associate professionals	4.2
Tradespersons and related workers	4.6
Advanced clerical and service workers	3.7
Intermediate clerical and service workers	3.9
Intermediate production and transport workers	4.3
Elementary clerical, sales and service workers	3.3
Labourers and related workers	3.6
Total	4.1

(a) Index: Total hourly rates of pay excluding bonuses.

Source: Labour Price Index, Australia (cat. no. 6345.0).

NOV 1995 NOV 2005 % CHANGE

AVERAGE WEEKLY TOTAL EARNINGS (\$)

Full-time adults			
Males	761.60	1 156.80	51.9
Females	596.00	935.50	57.0
Persons	702.90	1 078.50	53.4

Source: Average Weekly Earnings, Australia (cat. no. 6302.0).

MALES FEMALES MAY 2004
% % PERSONS
% % %

METHODS OF SETTING PAY

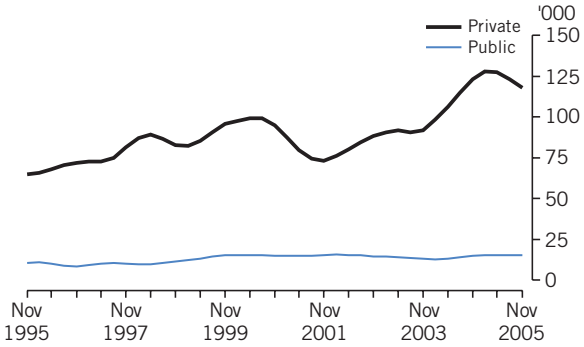
Award only	15.7	24.4	20.0
Collective Agreements			
Registered	35.2	41.4	38.3
Unregistered	3.0	2.2	2.6
Individual Arrangements			
Registered	3.0	1.9	2.4
Unregistered (a)	35.2	27.2	31.2
Working Proprietors of incorporated businesses (a)	7.8	2.9	5.4
Total	100.0	100.0	100.0

(a) Prior to 2004, working proprietors of incorporated businesses were classified to unregistered individual arrangements.

Source: Employee Earnings and Hours, Australia (cat. no. 6306.0).

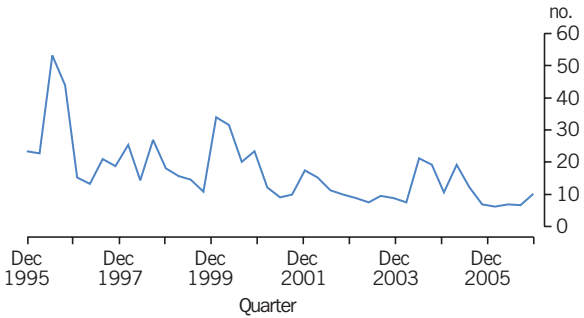
EMPLOYER SURVEY DATA

JOB VACANCIES BY SECTOR: TREND ESTIMATES



Source: Job Vacancies, Australia (cat. no. 6354.0).

INDUSTRIAL DISPUTES: WORKING DAYS LOST PER THOUSAND EMPLOYEES



Source: Industrial Disputes, Australia (cat. no. 6321.0.55.001).

INTERNATIONAL

	POPULATION 2004 (MILLION)	STANDARDISED UNEMPLOYMENT RATE (a) 2004 %
--	------------------------------	--

INTERNATIONAL COMPARISONS: SELECTED CHARACTERISTICS

Australia	20.1	5.5
Canada	31.9	7.2
France	60.2	9.6
Germany	82.5	9.5
Japan	127.7	4.7
Sweden	9.0	6.4
United Kingdom	59.8	4.7
United States of America	293.7	5.5

(a) ILO/OECD definition.

Source: OECD in Figures 2005, OECD Main Economic Indicators, January 2006.

SYMBOLS AND ABBREVIATIONS USED

Values shown in Australian dollars (\$). Where figures have been rounded, discrepancies may occur between the sums of the component items and totals.

Aug — August **Nov** — November **qtr** — quarter

Dec — December **na** — not available **%** — per cent

no. — number **'000** — thousand

OECD — Organisation for Economic Co-operation & Development

ILO — International Labour Organisation

ACKNOWLEDGMENTS

ABS publications draw extensively on information provided freely by individuals, businesses, governments and other organisations. Their continued cooperation is very much appreciated; without it the wide range of statistics published by the ABS would not be available for general use by the community. Information received by the ABS is treated in strict confidence as required by the *Census and Statistics Act 1905*.

FOR MORE INFORMATION

INTERNET

www.abs.gov.au

The ABS web site is the best place for data from our publications and information about the ABS.

LIBRARY

A range of ABS publications is available from public and tertiary libraries Australia wide. Contact your nearest library to determine whether it has the ABS statistics you require, or visit our web site for a list of libraries.

INFORMATION AND REFERRAL SERVICE

Our consultants can help you access the full range of information published by the ABS that is available free of charge from our web site, or purchase a hard copy publication.

Information tailored to your needs can also be requested as a 'user pays' service.

Specialists are on hand to help you with analytical or methodological advice.

PHONE

1300 135 070

EMAIL

client.services@abs.gov.au

FAX

1300 135 211

FREE ACCESS TO STATISTICS

All ABS statistics can be downloaded free of charge from the ABS web site.

WEB ADDRESS

www.abs.gov.au

POST

Client Services, ABS
GPO Box 796
Sydney NSW 2001



2610400001064

ISSN 1031-041X

© Commonwealth of Australia 2006
Produced by the
Australian Bureau of Statistics