

森林分子遺傳學實驗室

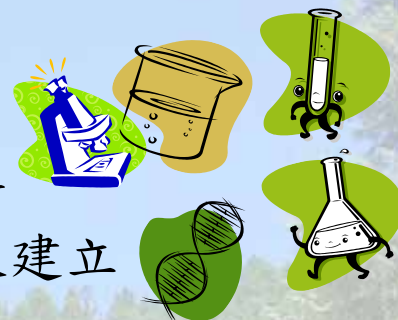


實驗室主持人
曲芳華

博士班：陳昱蓉
碩士班：林彥良、吳家禎
 陳藝勻、李承先
助 理：紀尚芬

研究方向：

1. 本土樹種功能性基因體學之研究
2. 二次代謝產物生合成基因之多樣性分析
3. 中草藥及健康食品產業化體系之推動及建立

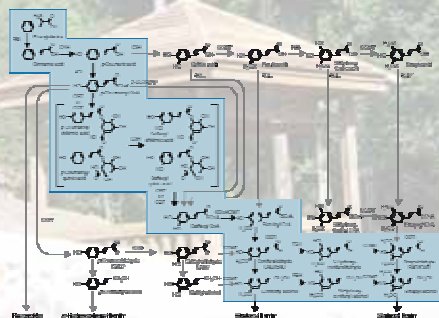
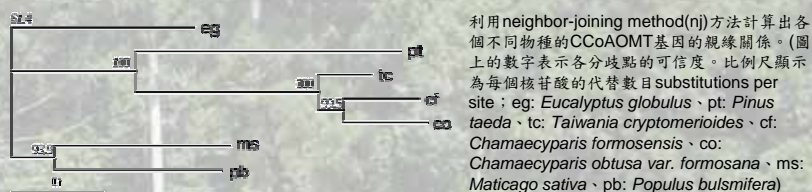
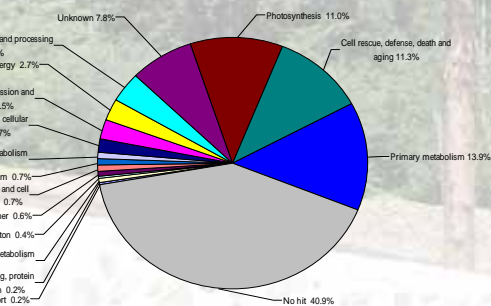
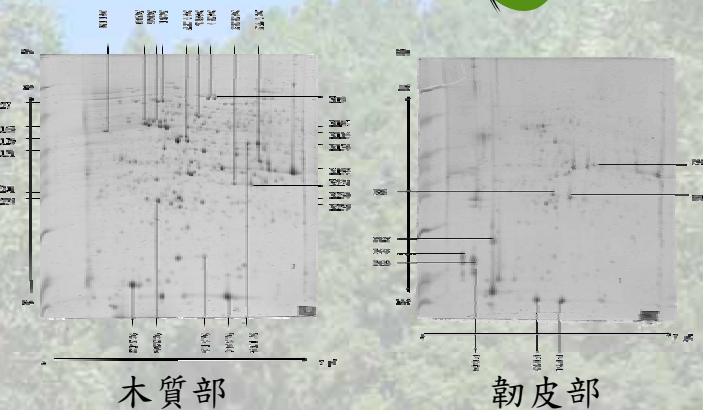


Taiwania cryptomerioides

臺灣杉

基因資料庫之建立

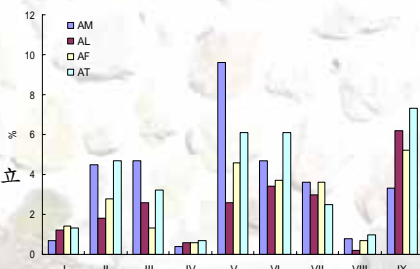
蛋白質體分析



Antrodia cinnamomea

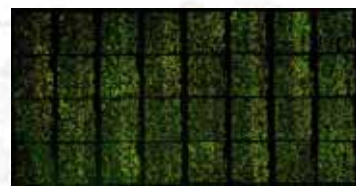
樟芝

基因資料庫之建立



- I: Cell fate, cell cycle and DNA processing
- II: Cell rescue, defense and virulence
- III: Cellular transport, transport facilitation and transport routes
- IV: Cellular communication/signal transduction
- V: Metabolism
- VI: Protein fate and protein synthesis
- VII: Transcription
- VIII: Energy
- IX: Unknown

晶片分析



二次代謝生合成基因之比較分析

