

# R Installation Instructions for Windows

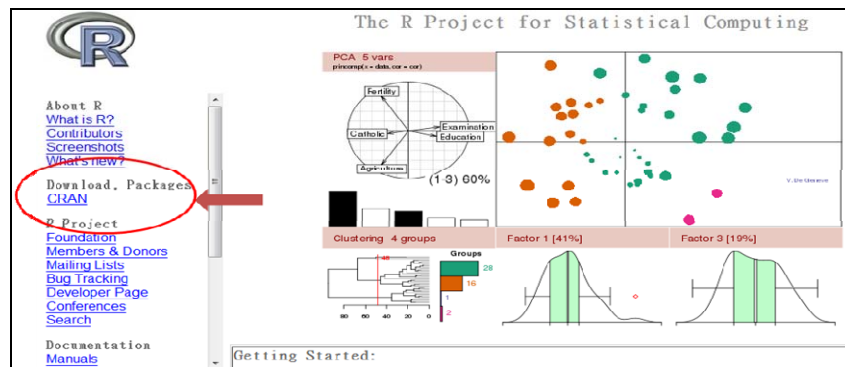
Yashin Hsiao (cocacatyaya@gmail.com)

The following resources provide guidance and step-by-step instructions for installing R:

1. Download the latest version of R

1.1 Visit website of R project from : <http://www.r-project.org/>

1.2 Press CRAN on the left side of webpage



1.3 Please choose an URL closed to your location.



For example, you may choose to download R from National Taiwan University, Taipei. Press <http://cran.csie.ntu.edu.tw/>



## 1.4 Choose Windows (You may choose different versions based on your computer operation system)



CRAN  
[Mirrors](#)  
[What's new?](#)  
[Task Views](#)  
[Search](#)

About R  
[R Homepage](#)  
[The R Journal](#)

Software  
[R Sources](#)  
[R Binaries](#)  
[Packages](#)  
[Other](#)

### The Comprehensive R Archive Network

Frequently used pages

#### Download and Install R

Precompiled binary distributions of the base system and contributed packages, **Windows and Mac** users most likely want one of these versions of R:

- [Linux](#)
- [MacOS X](#)
- [Windows](#)

#### Source Code for all Platforms

Windows and Mac users most likely want the precompiled binaries listed in the upper box, not the source code. The sources have to be compiled before you can use them. If you do not know what this means, you probably do not want to do it!

- **The latest release** (2010-05-31): [R-2.11.1.tar.gz](#) (read [what's new](#) in the latest version).

## 1.5 Choose Base



CRAN  
[Mirrors](#)  
[What's new?](#)  
[Task Views](#)  
[Search](#)

About R  
[R Homepage](#)  
[The R Journal](#)

Software  
[R Sources](#)  
[R Binaries](#)  
[Packages](#)  
[Other](#)

### R for Windows

This directory contains 32-bit binaries for a base distribution and packages to run on i386/x64 Windows. See [here](#) for a 64-bit Windows port.

Note: CRAN does not have Windows systems and cannot check these binaries for viruses. Use the normal precautions on downloaded executables.

Subdirectories:

- [base](#) Binaries for base distribution (managed by Duncan Murdoch)
- [contrib](#) Binaries of contributed packages (managed by Uwe Ligges)

Please do not submit binaries to CRAN. Package developers might want to contact Duncan Murdoch or Uwe Ligges dire of questions / suggestions related to Windows binaries.

You may also want to read the [R FAQ](#) and [R for Windows FAQ](#).

Last modified: April 4, 2004, by Friedrich Leisch

## 1.6 Download R (Latest version : R 2.11.1 for Windows)



CRAN  
[Mirrors](#)  
[What's new?](#)  
[Task Views](#)  
[Search](#)

About R  
[R Homepage](#)  
[The R Journal](#)

Software  
[R Sources](#)  
[R Binaries](#)  
[Packages](#)  
[Other](#)

### R-2.11.1 for Windows (32 bit build)

[Download R 2.11.1 for Windows](#) (33 megabytes, 32 bits)

[Installation and other instructions](#)

New features in this version: [Windows specific](#), [all platforms](#).

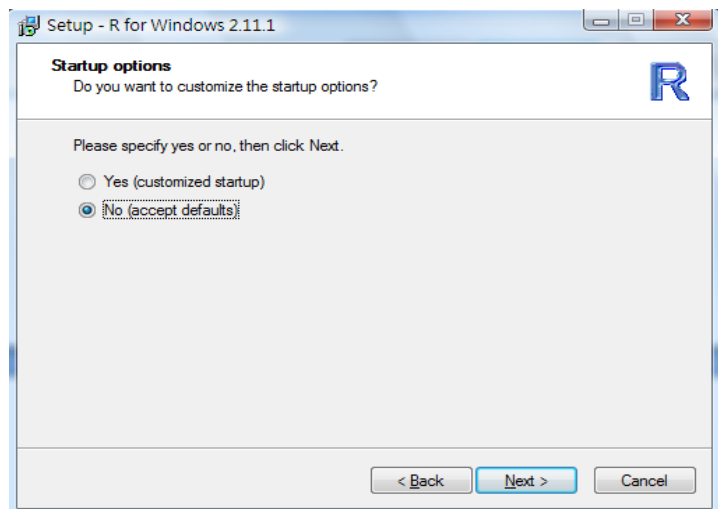
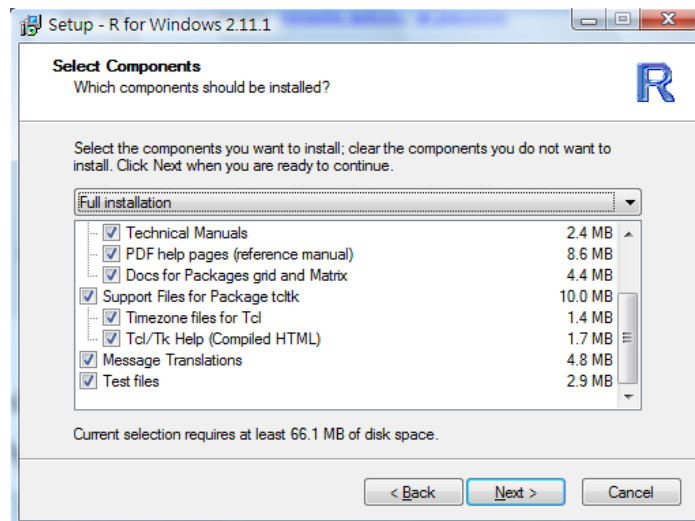
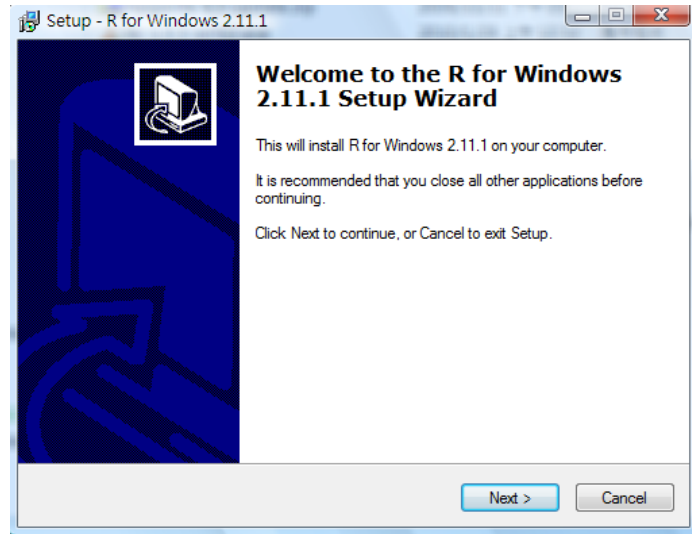
If you want to double-check that the package you have downloaded exactly matches the package distributed by R, you can compare the [md5sum](#) of the .exe to the [true fingerprint](#). You will need a version of md5sum for windows: both [graphical](#) and [command line versions](#) are available.

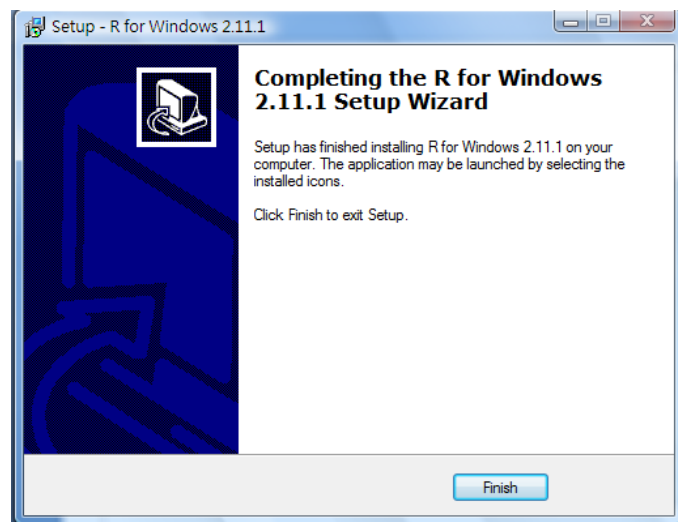
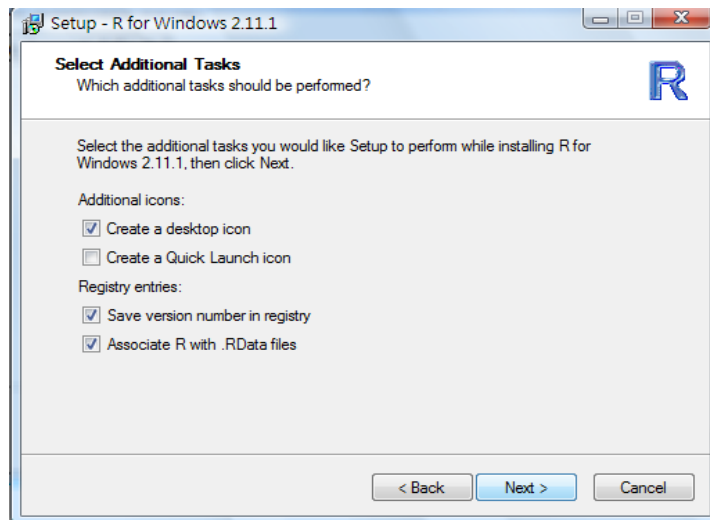
Frequently asked questions

- [How do I install R when using Windows Vista?](#)
- [How do I update packages in my previous version of R?](#)
- [Should I run 32-bit or 64-bit R?](#)

Message the [R FAQ](#) for general information about R and the [R Windows FAQ](#) for Windows specific information

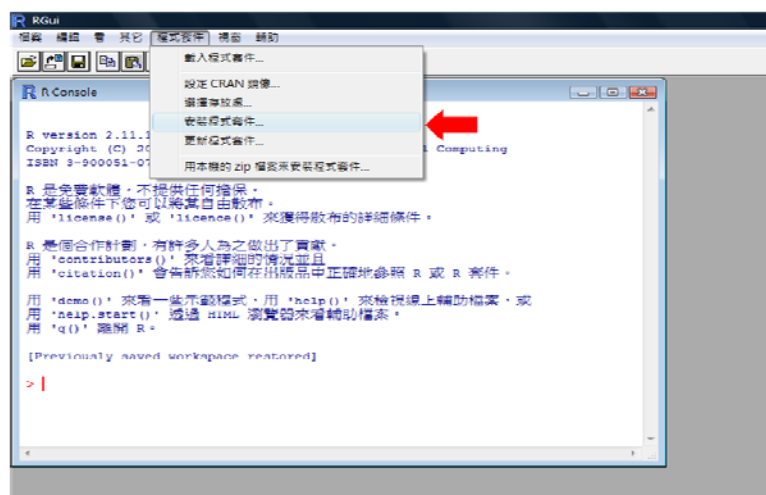
1.7 When download is completed, double clicks on “R-2.11.1-win32.exe”. It will install R automatically.



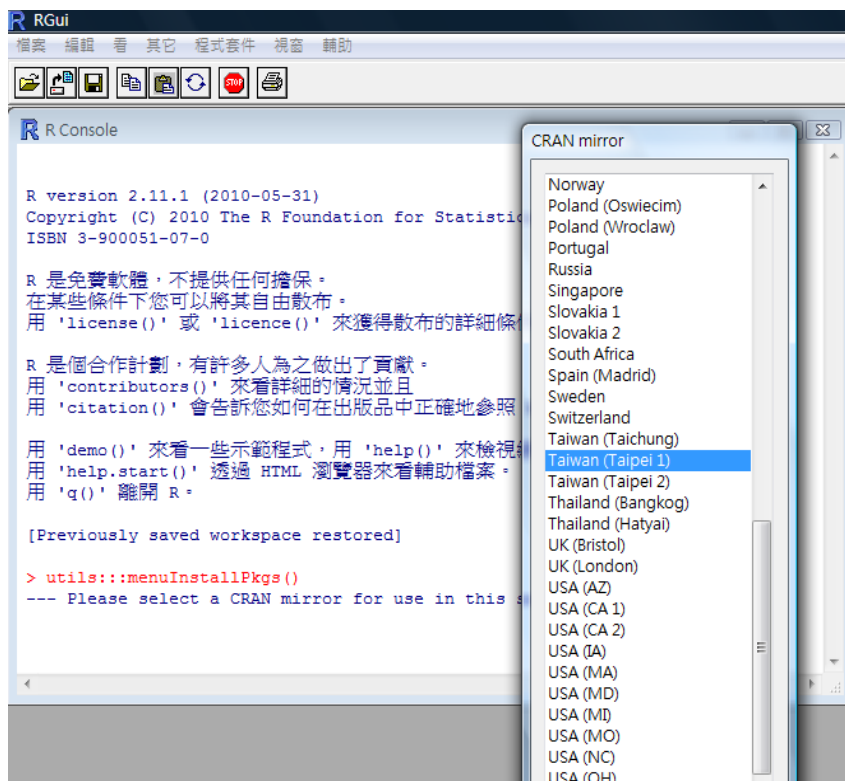


## 2. Install packages

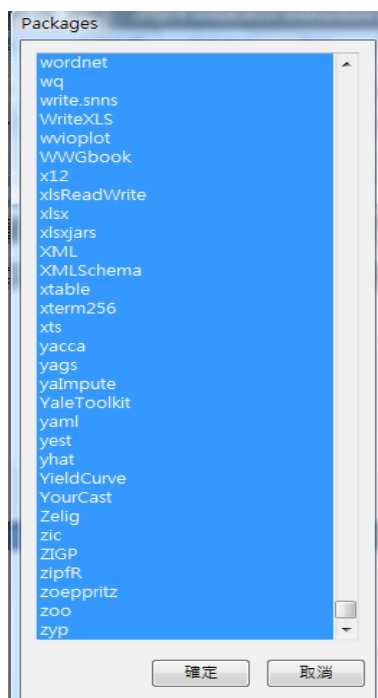
### 2.1 Open RGui, and Choose 安裝程式套件



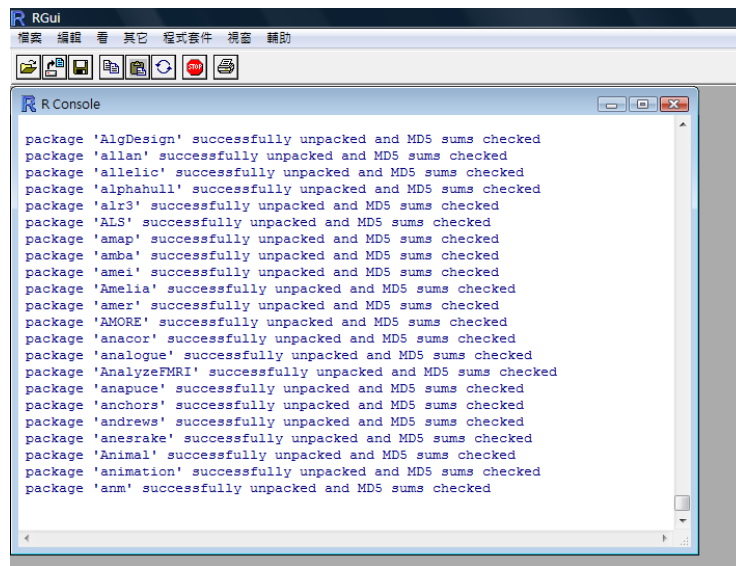
## 2.1 Choose CRAN mirror



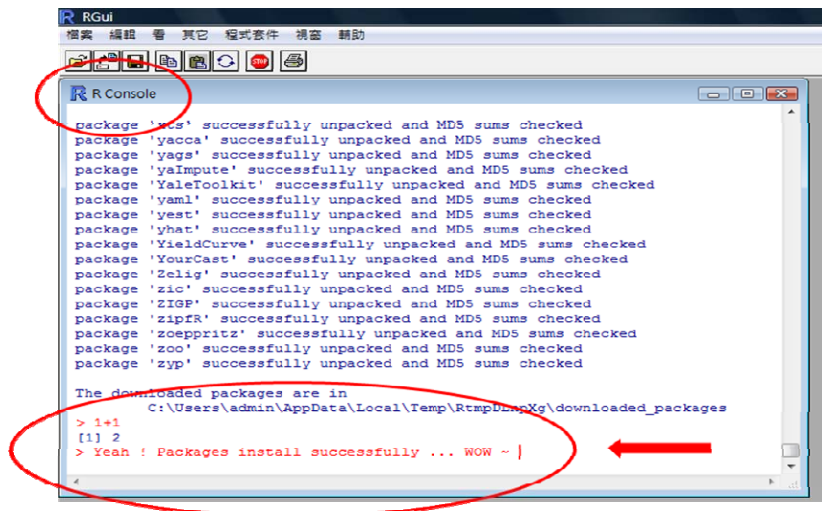
## 2.2 Select All Packages and press 確定



2.3 It takes a while (more than 10 min) to complete download process. During the download, you may not do anything with RGui.



2.4 When download is completed, you may able to type any command on R Console. For example :



2.5 Turn off RGui and save the workspace image.

- For more information :
  1. <http://cran.csie.ntu.edu.tw/manuals.html>
  2. Open RGui and choose /輔助/手冊(PDF)